



APPLIED MAPPING FOR OIL & GAS EXPLORATION & DEVELOPMENT

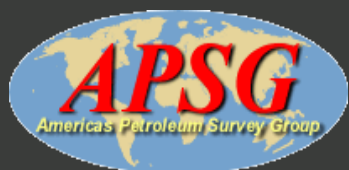
One day training course covering geodesy, co-ordinate transformations, spatial data handling and presentations for non geodetic professionals working with spatial data.

Presentations are by subject matter experts from oil and gas companies, consultancies, and geophysical acquisition and processing contractors.

October 20, 2009, 08:00 to 16:30 hours

Venue: Shell Woodcreek Conference Center, Houston, Texas

Cost: \$450 per person



More information & online registration at
www.apsg.info



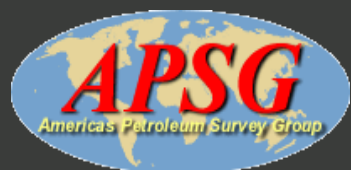
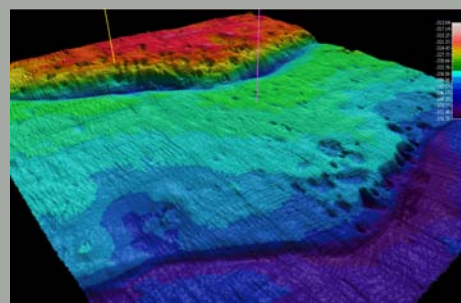
Course Content

Seminar Introduction & Context	Brian Schostak, Shell
Geodetics & Cartography in E&P	Jim Cain, Cain & Barnes LP
Acquisition Positioning	Victor Ramirez, CGGVeritas and Kevin Crozier, PGS
Some common processing problems and guidance on their solutions	Martin Rayson, Geomatic Solutions
Data Loading and Manipulation	John Conner, EnSoCo
Overview of Wellbore Positioning Considerations.	Mark Michell, Devon Energy
GIS for QC, Project Management, Data Presentation and all of the above	Michael Barnes and Mike Jensen, Cain & Barnes LP
Q&A with the Subject Matter Experts	Practical Exercises, followed by Discussion

All Attendees Will Receive:

Completion Certificate, all course materials, 1 year free Associate Membership to APSG, lunch and refreshments, and the ability to recognize and handle spatial data challenges.

Attendee hours at this event may be applied to Continuing Professional Development.



More information & online registration at
www.apsg.info

